

Release Notes

TRIMBLE GEOSPATIAL

19 August 2024

TRIMBLE SURVEY GNSS FIRMWARE

Trimble Survey GNSS Firmware version 5.67/6.27 (August 2024)

This firmware version includes fixes and enhancements to the Survey GNSS Receiver Firmware.

Note: For best results, users should upgrade to Trimble® Access™ field software version 2024.01 (2017.24 for legacy controllers) or later when using Survey GNSS Receiver Firmware version 5.67/6.27.

Supported GNSS receivers

The following table identifies the Survey GNSS receivers supported by this revision. To upgrade your receiver's firmware, a current and valid receiver warranty is required. Your warranty must cover the time period beyond the first day of the month of the "Warranty Date."

Receiver Model	Firmware Version	Warranty Date
Trimble R980	6.27	September 2023
Trimble R780-2		

New features and changes

Description	Type	Supported Receiver Models
Increase receiver internal upper temperature limit when operating on internal battery power: <ul style="list-style-type: none">Trimble R980 upper limit increase to 60°C (140°F)Trimble R780-2 upper limit increase to 55°C (130°F) <p>Note: Receiver upper internal operating temperature limit when operating on external power is 65°C (150°F).</p>	Enhancement	Trimble R980 Trimble R780-2

Note: Before updating, download and backup any data files that are on the receiver.

Trimble Installation Manager

Trimble Installation Manager is a free download and can be found here: install.trimble.com

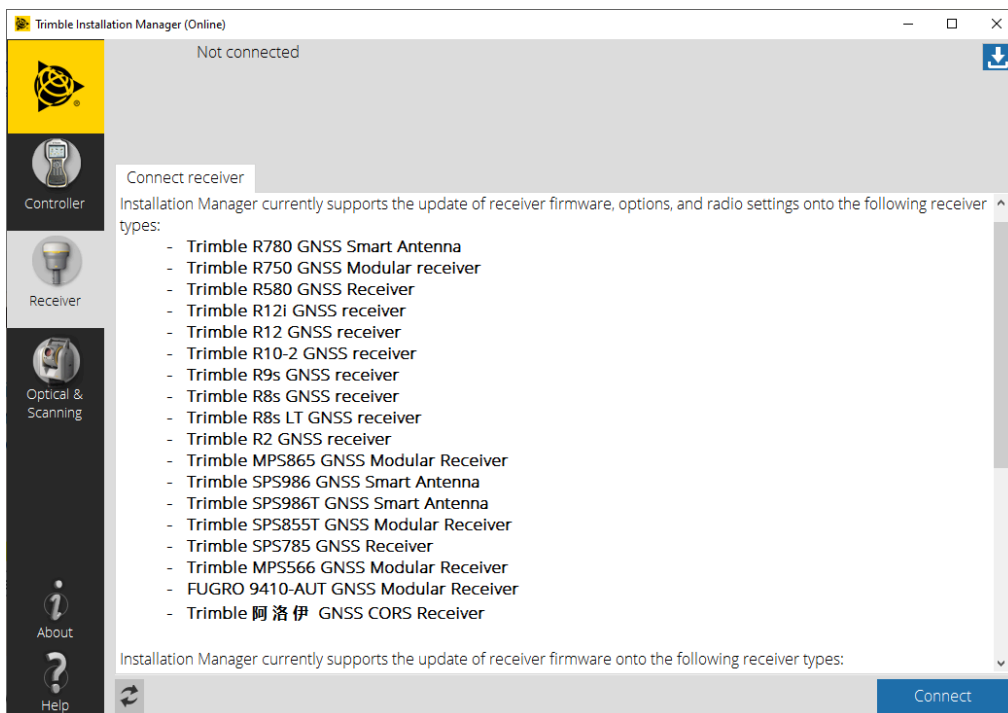
The primary Trimble Installation Manager functions for GNSS receivers are:

- Warranty Activation
- Option Loading
- Radio Configuration
- Firmware Installation

The following Trimble Survey GNSS receivers are currently supported:

Receiver Model	Supported Functions
Trimble R980	Warranty Activation
Trimble R780-2	Option Loading
Trimble R780	Radio Configuration
Trimble R750 / R750MON	Firmware Installation
Trimble R580	
Trimble R12i	
Trimble R12	
Trimble R10-2	
Trimble R8s	
Trimble R2	
Trimble R10	Firmware Installation

After installing, launch Trimble Installation Manager, connect the receiver with the appropriate data cable to your computer and click on **Connect**.



Trimble Installation Manager will display receiver-specific information. Select the firmware version you would like to install from the selection menu in the top right corner. Click on **Install** to start the installation process.

For legacy Trimble Survey GNSS receivers not supported by Trimble Installation Manager, the latest version of firmware can be downloaded (Winflash installer or *.timg file) from the [Support & Downloads for Discontinued Products](#) page on the Trimble Geospatial website.

For more information

For more information, contact your local Trimble Distribution Partner.